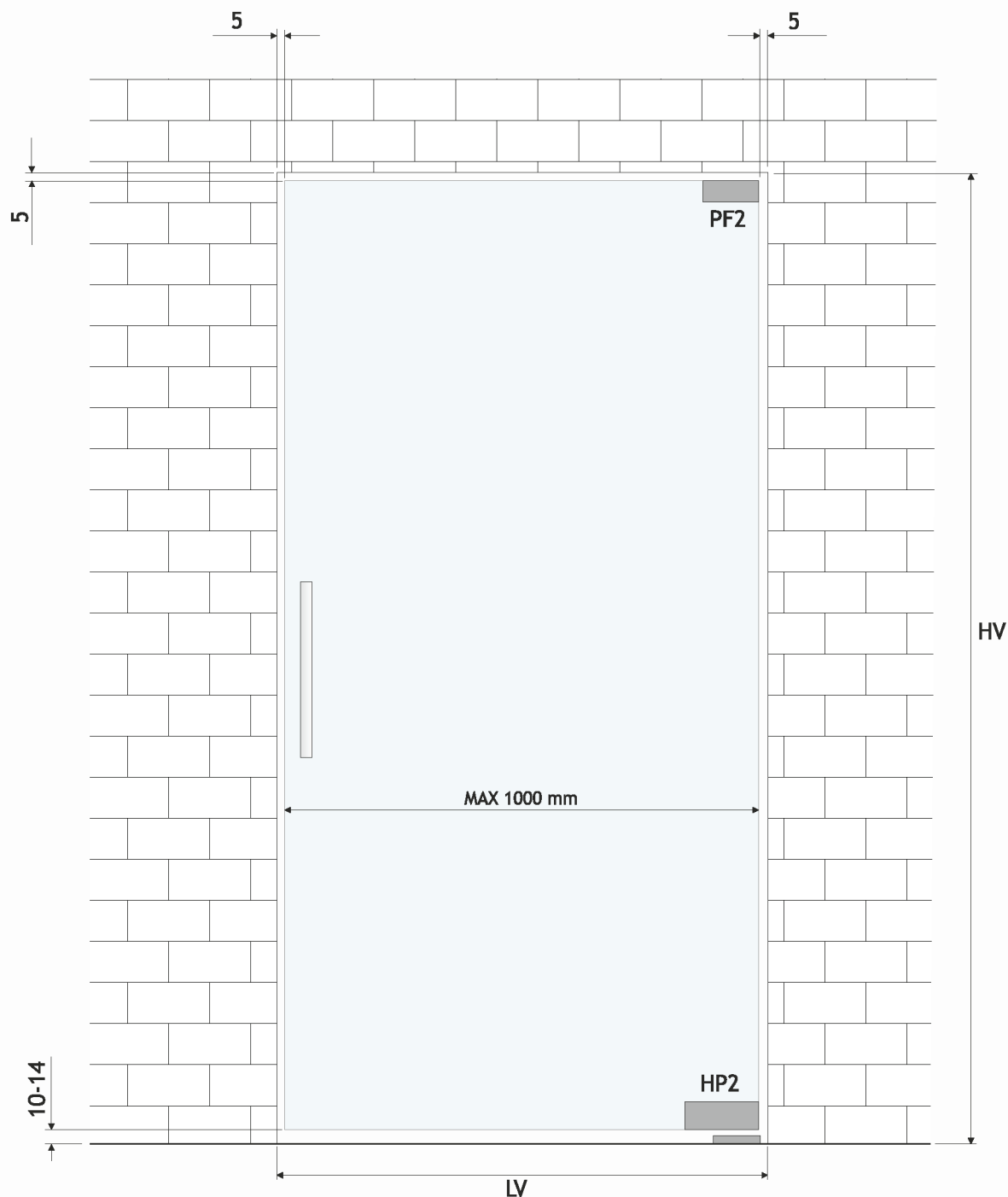


**HP02**

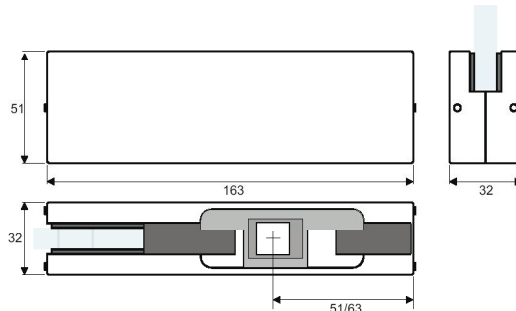
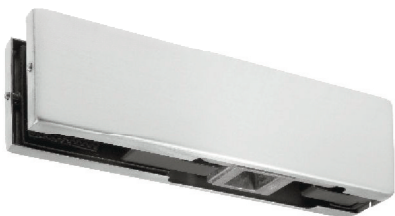


Dimensionamento della porta consigliato, anta singola	Recommended glass sizing, single door
Larghezza porta = $LV - 10$ mm	Door width = $LV - 10$ mm
Altezza porta = $HV - 15/19$ mm	Door height = $HV - 15/19$ mm

**COMPONENTI E CERNIERE PER PORTE  
E DIVISORI IN VETRO**

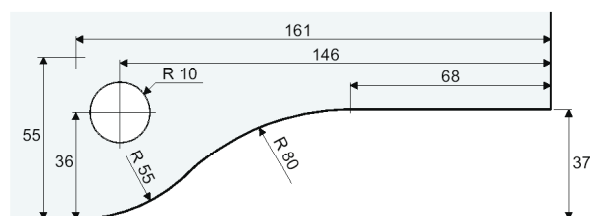
**GLASS DOORS PATCH  
FITTINGS AND HINGERS**

**PF01**

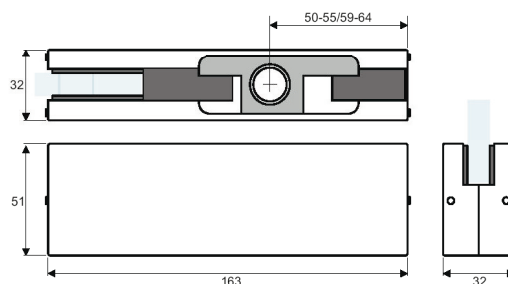


Cerniera inferiore serie 51  
Innesto per chiudiporta quadro Italia  
Corpo realizzato in fusione di alluminio  
Copertine in acciaio inox Aisi 304

Lower hinge 51 series  
Squared Italian standard door closer inset  
Diecast aluminium body manufacturing  
Aisi 304 stainless steel covers

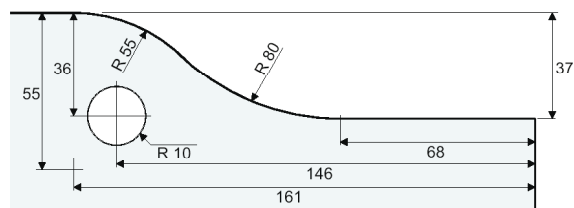


**PF02**



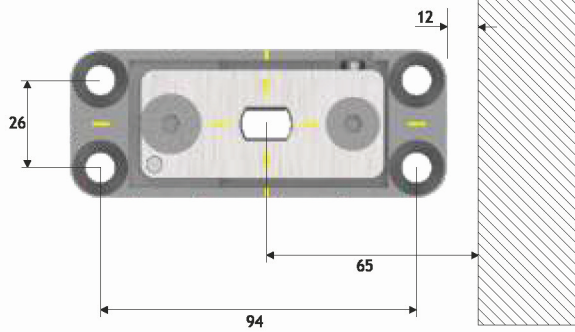
Cerniera superiore regolabile serie 51  
Corpo realizzato in fusione di alluminio  
Copertine in acciaio inox Aisi 304  
Disponibili copertine maggiorate per abbinamento con HP02

Adjustable upper hinge 51 series  
Diecast aluminium body manufacturing  
Aisi 304 stainless steel covers  
Larger covers available for HP02 matching



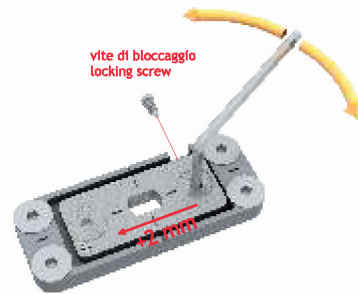
**HP02**

1



Corretta installazione della base di fissaggio: i segni di riferimento sono allineati  
Correct setting of the fixing plate: reference marks are aligned

3



Regolazione lineare della base mediante bussola eccentrica: + 2mm. dai segni di riferimento  
Linear adjustment with eccentric bush + 2mm from alignment marks

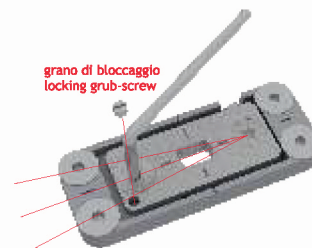
Linear adjustment with eccentric bush + 2mm from alignment marks

2



Fissaggio della base e allineamento della rotazione superiore  
Baseplate fixing and upper pivot alignment

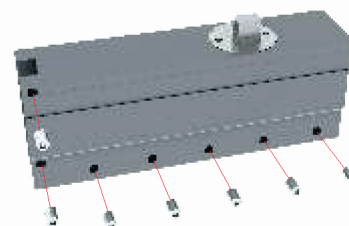
4



Regolazione angolare della base:  $\pm 2^\circ$   
Fermare la base agendo sulla vite e quindi sul grano di bloccaggio

Fixing base angular adjustment:  $\pm 2^\circ$   
Stop the fixing plate acting on the screw and then on the locking grub-screw

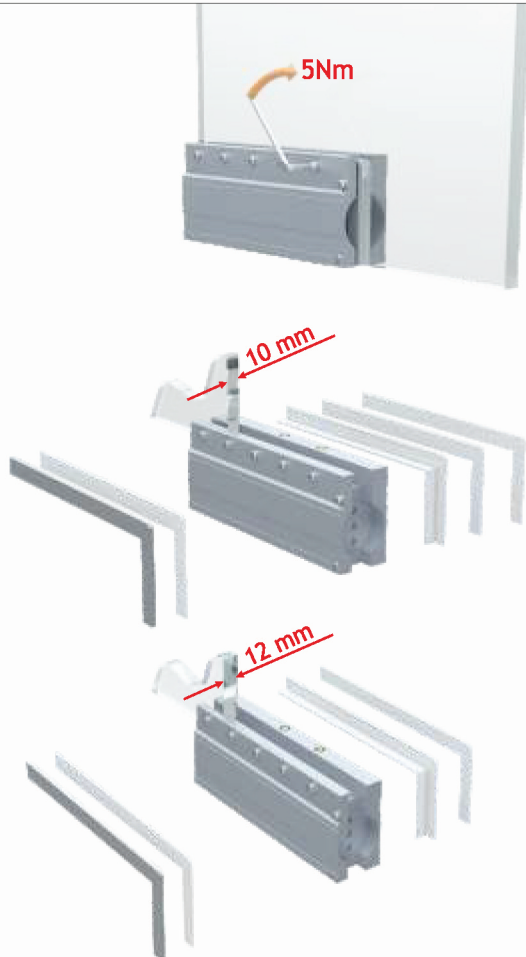
5



Montaggio dei grani di serraggio  
Mounting of fastening grub-screws

**HP02**

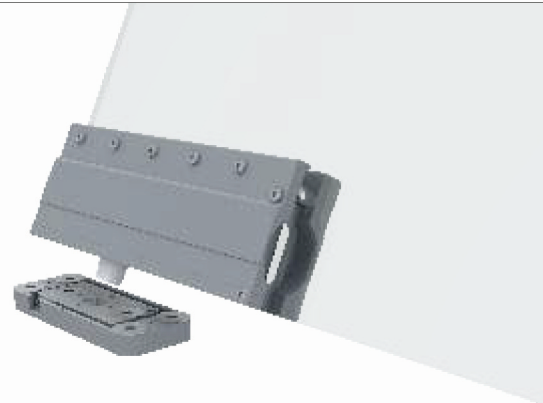
6



Montaggio della cerniera sulla porta. Il numero di guarnizioni da utilizzare dipende dallo spessore del vetro. Serraggio dei grani di fissaggio a 5Nm mediante la nostra chiave dinamometrica CDK01 (acquistabile a parte)

Mounting of the hinge on the door. The number of gaskets depends on the glass thickness. Grub-screws tightening to 5Nm using our CDK01 torque wrench (supplied separately)

7



Installazione della porta con cerniera montata

Installation of the door with hinge

8



Se necessaria la regolazione longitudinale ed angolare della porta aprire l'anta e operare come indicato nelle figure 3 e 4

If longitudinal and angular adjustment of the door is required, open the leaf and operate as shown in the figures 3 and 4

9



Regolazione della velocità di chiusura della porta  
Valvola 1: controllo della velocità di chiusura tra 90° e 15°  
Valvola 2: controllo della velocità di chiusura tra 15° e 0°

Door closing speed adjustment  
Valve 1: control of closing range 110° - 15°  
Valve 2: control of closing range 15° - 0°

10

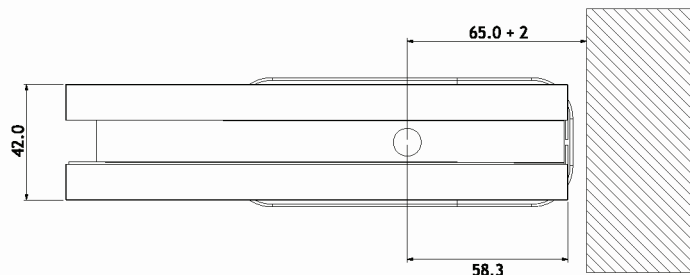
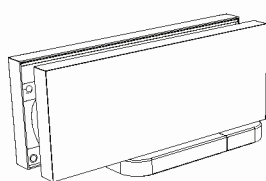
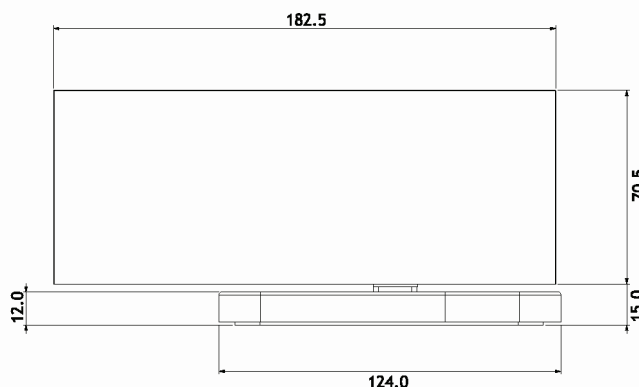
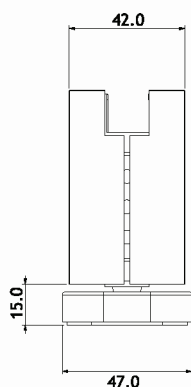


Montaggio delle copertine

Covers mounting

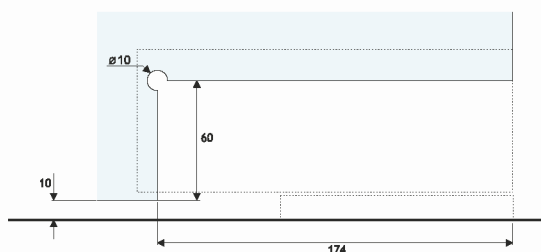
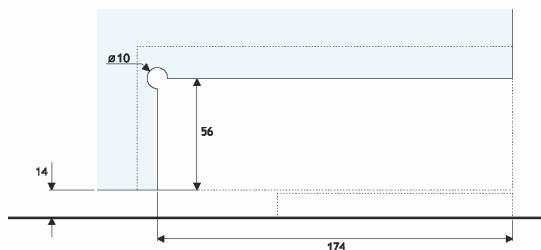


**HP02**



Cerniera inferiore oleodinamica con chiudiporta integrato  
Stop a 0° +90° -90°  
Regolazione della velocità di chiusura e dello scatto  
Regolazione della base: ± 1 mm nelle due direzioni  
Regolazione angolare della base: ± 2°  
Testata 500.000 cicli di apertura  
Compatibile con cerniera superiore PF02 e tutti gli altri accessori delle serie PF

Hydraulic lower hinge with integrated door closer  
Stop at 0° +90° -90°  
Adjustable closing and brake speed  
Adjustable baseplate: ± 1 mm and ± 2°  
500.000 opening cycles tested  
It works together PF02 upper hinge and all others PF series accessories

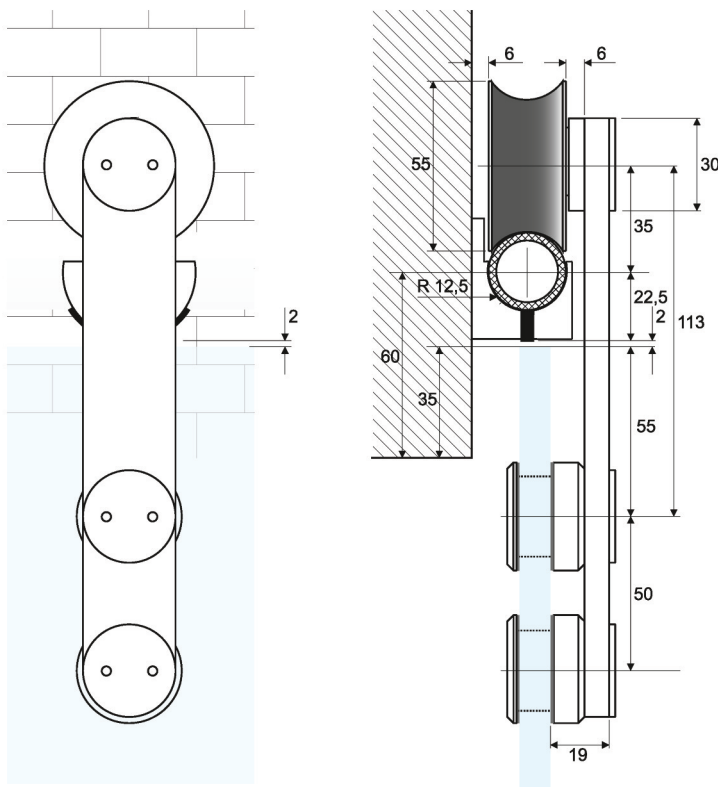


SISTEMI E COMPONENTI  
PER PORTE SCORREVOLI

SLIDING GLASS DOORS  
SYSTEMS AND FITTINGS



## R1 SYSTEM



R01MK	
Kit anta singola con fissaggio a muro	Wall fixing single door set
Carrelli R01 n. 2 pz	R01 rollers 2 pcs
Fissaggi muro R02 n. 5 pz	R02 wall fixing 5 pcs
Stop destro R04 n. 1 pz	R04 right stop 1 pc
Stop sinistro R05 n. 1 pz	R05 left stop 1 pc
Tappi estremità binario R06 n. 2 pz	R06 track end plugs 2 pcs
Guida a pavimento R07 n. 1 pz	R07 floor guide 1 pc
Esclusa rotaia R08M venduta al metro	Extra R08M track sold by the meter

Sistema tecnico a vista per porte scorrevoli  
 Fissaggio a parete, a vetro o a soffitto  
 Movimento silenzioso su cuscinetti a sfera  
 Ampia regolazione in altezza sui carrelli  
 Facile installazione: si monta operando solo dall'esterno  
 Realizzato completamente in acciaio inox Aisi 304  
 Lunghezza delle barre cm 200-300-400-600  
 Disponibile in kit o componenti separati

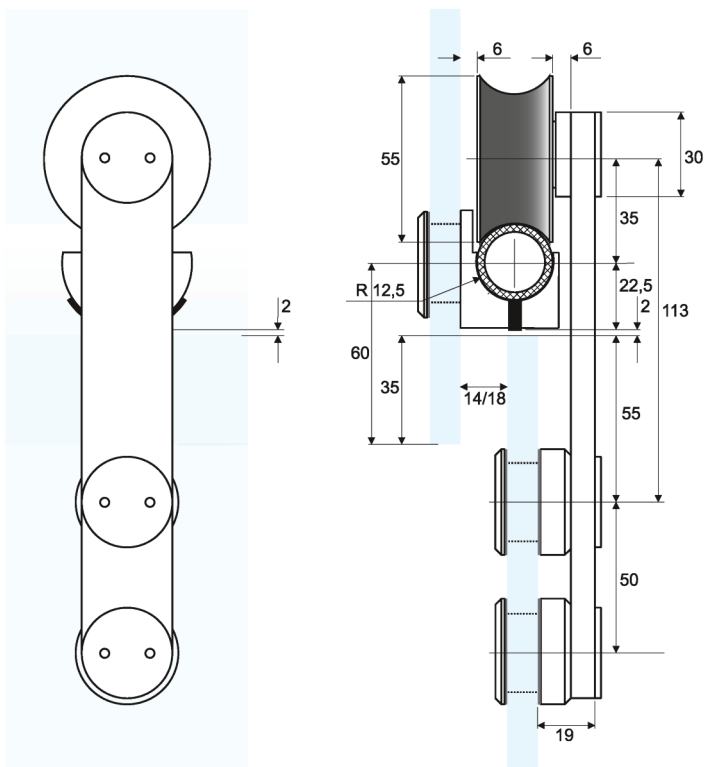
At sight technical sliding glass doors system  
 Wall, glass and ceiling fixing  
 Silent ball bearing rollers  
 Wide height adjustment  
 Easy installation for one man job  
 Full Aisi 304 stainless steel manufacturing  
 Bar lenght: 200-300-400-600 cm  
 Complete sets or separate components available



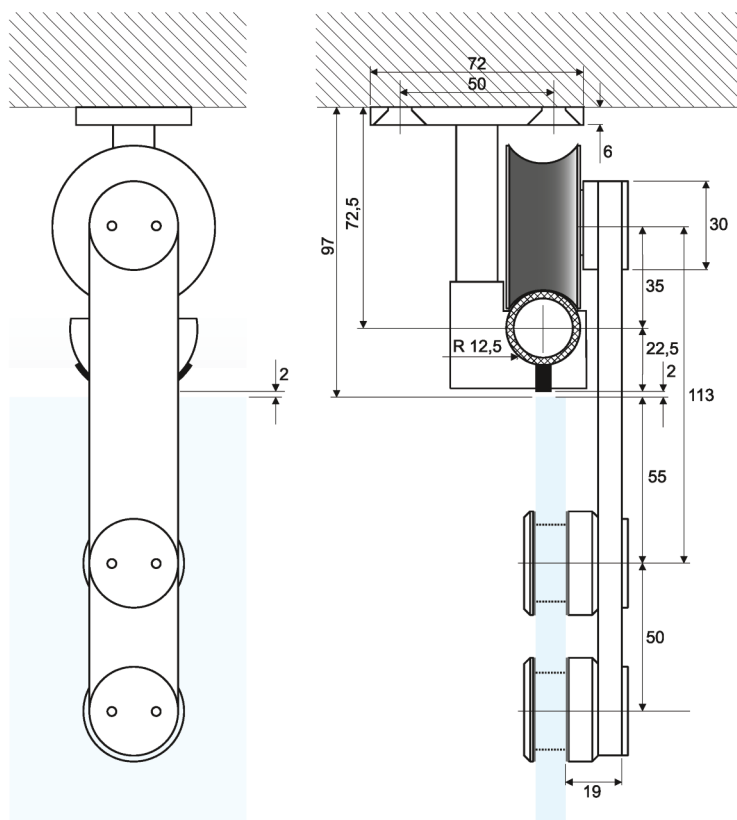
**SISTEMI E COMPONENTI  
PER PORTE SCORREVOLI**

**SLIDING GLASS DOORS  
SYSTEMS AND FITTINGS**

**R1 SYSTEM**



R01VK	
Kit anta singola con fissaggio a vetro	Glass fixing single door set
Carrelli R01 n. 2 pz	R01 rollers 2 pcs
Fissaggi vetro R03 n. 5 pz	R03 glass fixing 5 pcs
Stop destro R04 n. 1 pz	R04 right stop 1 pc
Stop sinistro R05 n. 1 pz	R05 left stop 1 pc
Tappi estremità binario R06 n. 2 pz	R06 track end plugs 2 pcs
Guida a pavimento R07 n. 1 pz	R07 floor guide 1 pc
Esclusa rotaia R08M venduta al metro	Extra R08M track sold by the meter



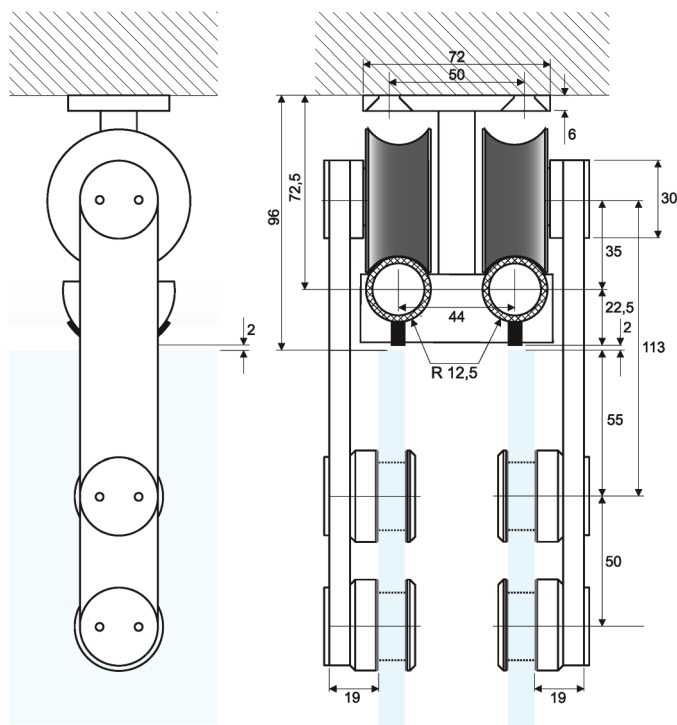
R01SK	
Kit anta singola con fissaggio a soffitto	Ceiling fixing single door set
Carrelli R01 n. 2 pz	R01 rollers 2 pcs
Fissaggi soffitto R285 n. 5 pz	R285 ceiling supports 5 pcs
Stop destro R04 n. 1 pz	R04 right stop 1 pc
Stop sinistro R05 n. 1 pz	R05 left stop 1 pc
Tappi estremità binario R06 n. 2 pz	R06 track end plugs 2 pcs
Guida a pavimento R07 n. 1 pz	R07 floor guide 1 pc
Esclusa rotaia R08M venduta al metro	Extra R08M track sold by the meter



**SISTEMI E COMPONENTI  
PER PORTE SCORREVOLI**

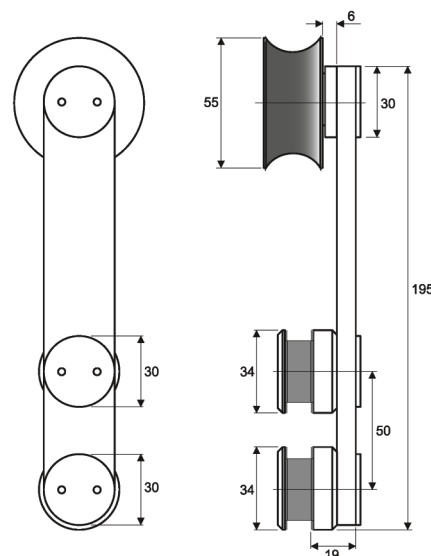
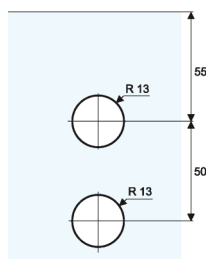
**SLIDING GLASS DOORS  
SYSTEMS AND FITTINGS**

**R1 SYSTEM**



R01S2K	
Kit anta doppia con fissaggio a soffitto	Ceiling fixing double door set
Carrelli R01 n. 4 pz	R01 rollers 4 pcs
Fissaggi a soffitto R28D n. 5 pz	R28D ceiling fixing 5 pcs
Stop destro R04 n. 2 pz	R04 right stop 2 pcs
Stop sinistro R05 n. 2 pz	R05 left stop 2 pcs
Tappi estremità binario R06 n. 4 pz	R06 track end plugs 4 pcs
Guida a pavimento R07 n. 2 pz	R07 floor guide 2 pcs
Rotaia R08M venduta a parte al	R08M track sold extra by the meter

**R01**



Carrello per sistema R1  
Movimento silenzioso su cuscinetti a sfera  
Regolazione in altezza sui carrelli  $\pm 5$  mm  
Facile installazione: si monta operando solo dall'esterno  
Realizzato in acciaio inox Aisi 304

R1 system carriage  
Silent ball bearing rolling  
 $\pm 5$  mm height adjustment  
Easy installation for one man job  
Aisi 304 stainless steel manufacturing



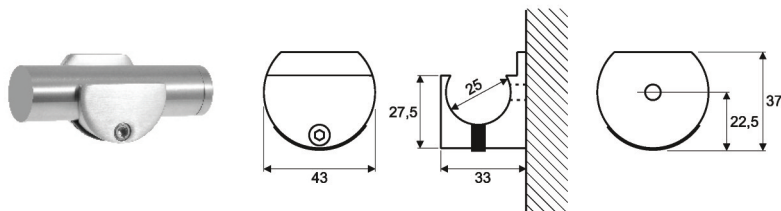
**SISTEMI E COMPONENTI  
PER PORTE SCORREVOLI**

**SLIDING GLASS DOORS  
SYSTEMS AND FITTINGS**

**R02**

Sostegno a muro con funzione anti-scarrucolamento per sistema R1  
Realizzato in fusione di acciaio inox Aisi 304

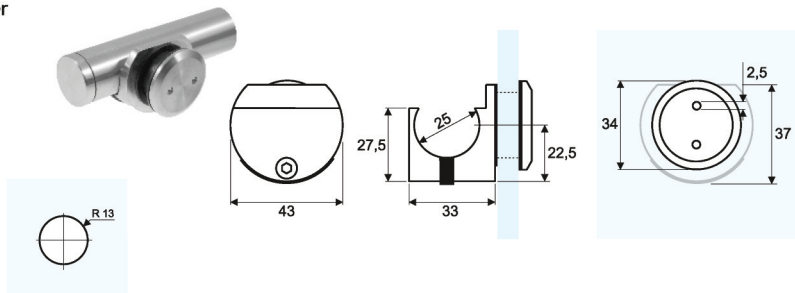
Wall fixing track support with anti-lift function for R1 system  
Diecast Aisi 304 stainless steel manufacturing



**R03**

Sostegno a vetro con funzione anti-scarrucolamento per sistema R1  
Realizzato in fusione di acciaio inox Aisi 304

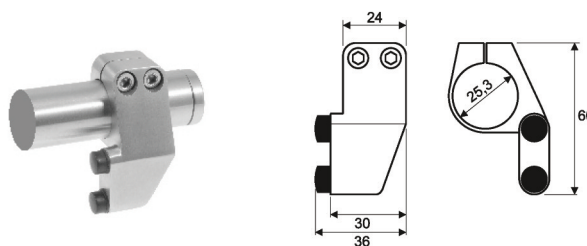
Glass fixing track support with anti-lift function for R1 system  
Diecast Aisi 304 stainless steel manufacturing



**R04**

Stopper destro per sistema R1  
Realizzato in fusione di acciaio inox Aisi 304

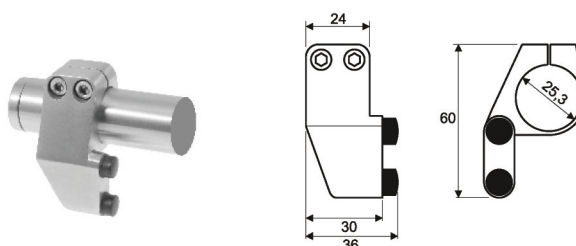
Right stop for R1 system  
Diecast Aisi 304 stainless steel manufacturing



**R05**

Stopper sinistro per sistema R1  
Realizzato in fusione di acciaio inox Aisi 304

Left stop for R1 system  
Diecast Aisi 304 stainless steel manufacturing





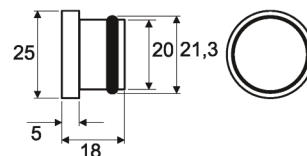
**SISTEMI E COMPONENTI  
PER PORTE SCORREVOLI**

**SLIDING GLASS DOORS  
SYSTEMS AND FITTINGS**

**R06**

Terminale a pressione per rotaia tubolare R08M  
Realizzato in acciaio inox Aisi 304

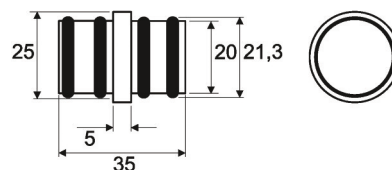
Pressure end plug for R08M tubular track  
Aisi 304 stainless steel manufacturing



**R06J**

Innesto di congiunzione a pressione per rotaia tubolare R08M  
Realizzato in acciaio inox Aisi 304

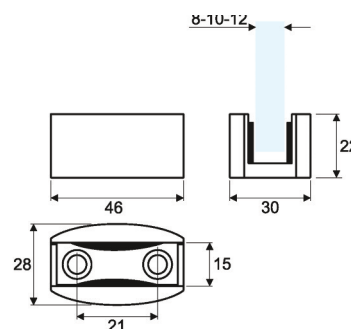
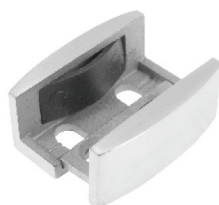
Pressure joint inset for R08M tubular track  
Aisi 304 stainless steel manufacturing



**R07**

Guida a pavimento smontabile e regolabile  
Realizzata in fusione di acciaio inox Aisi 304

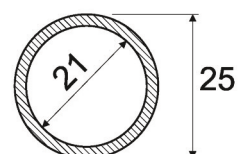
Dismountable and adjustable floor guide  
Diecast Aisi 304 stainless steel manufacturing



**R08M**

Rotaia tubolare per sistema R1  
Realizzata in acciaio inox Aisi 304  
Lunghezza delle barre cm 200-300-400-600

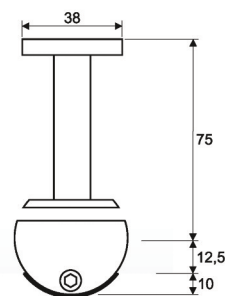
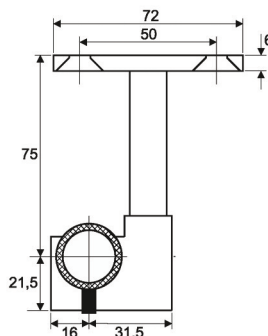
Tubular track for R1 system  
Aisi 304 stainless steel manufacturing  
Bar length: 200-300-400-600 cm



**SISTEMI E COMPONENTI  
PER PORTE SCORREVOLI**

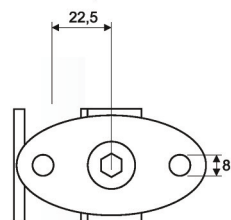
**SLIDING GLASS DOORS  
SYSTEMS AND FITTINGS**

**R28S**

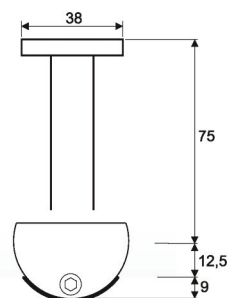
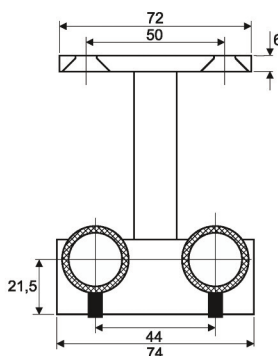


Supporto a soffitto per rotaia singola per sistema scorrevole R1  
Da utilizzarsi esclusivamente con carrelli R01  
Realizzato in fusione di acciaio inox Aisi 304

Ceiling fixing arm for single track for R1 system  
Use with R01 carriage only  
Diecast Aisi 304 stainless steel manufacturing

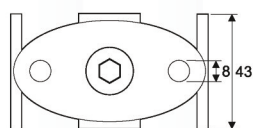


**R28D**

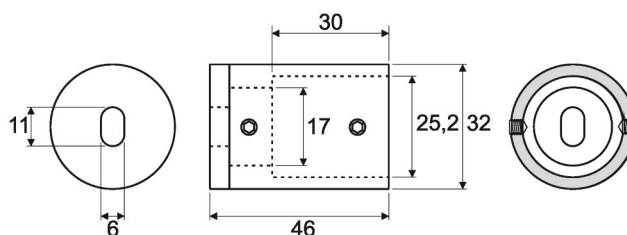


Supporto a soffitto per rotaie doppie per sistema scorrevole R1  
Da utilizzarsi esclusivamente con carrelli R01  
Realizzato in fusione di acciaio inox Aisi 304

Ceiling fixing arm for twin tracks for R1 system  
Use with R01 carriage only  
Diecast Aisi 304 stainless steel manufacturing

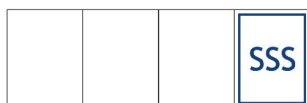


**R29**

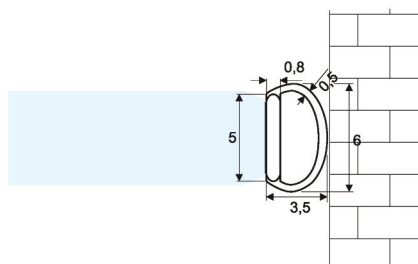
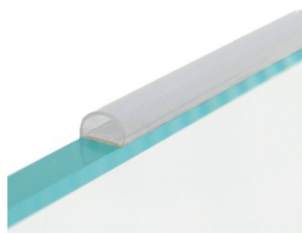


Terminale di fissaggio a muro per rotaia tubulare R08M  
Realizzata in fusione di acciaio inox Aisi 304

Track end wall fixing for R08M tubular track  
Diecast Aisi 304 stainless steel manufacturing

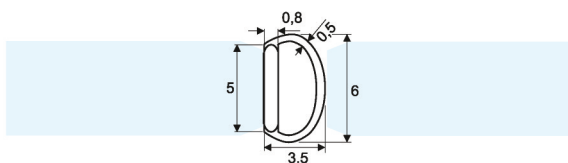


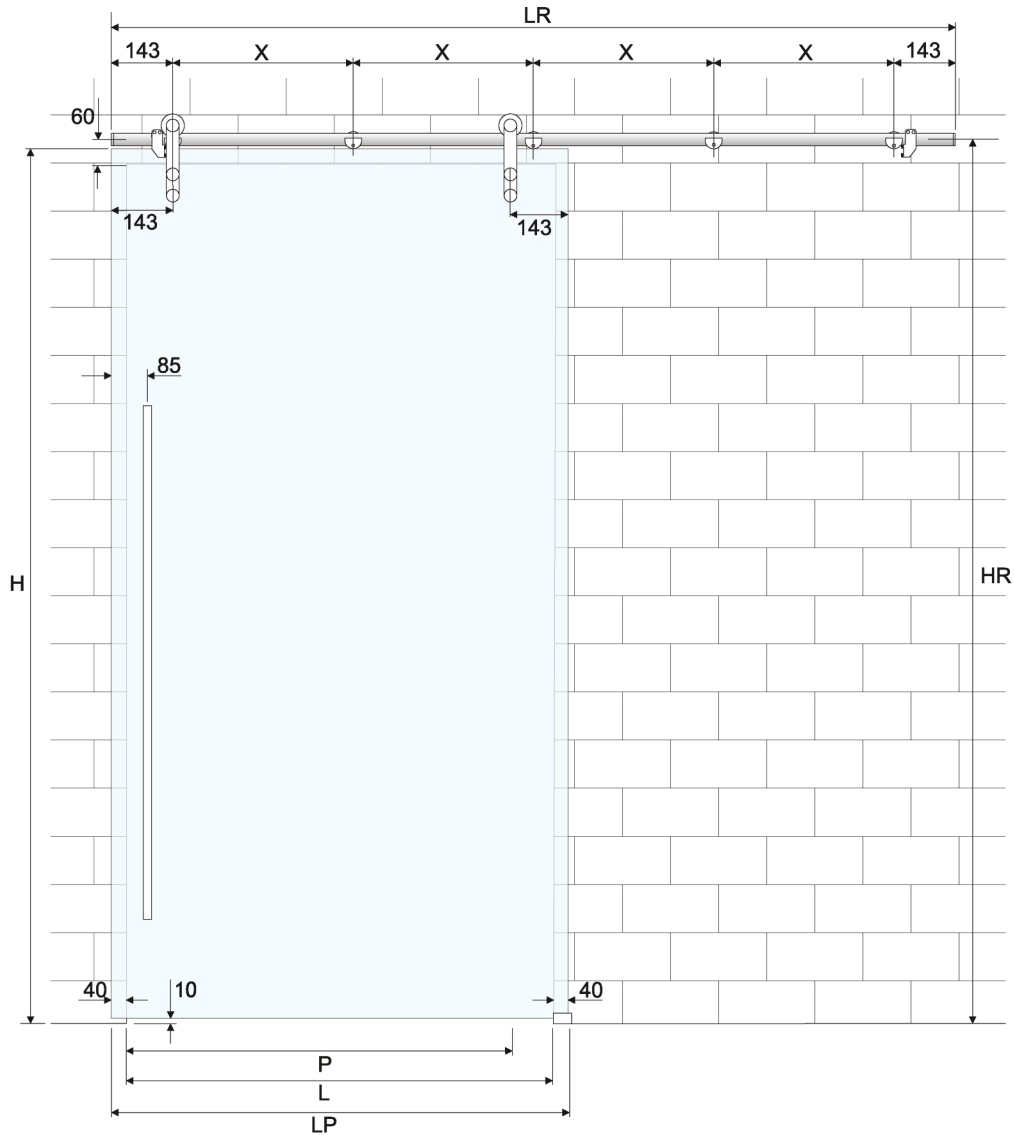
**AS03R**



Guarnizione a palloncino adesiva  
Utilizzabile per porte scorrevoli a singola e doppia anta  
Speciale elastomero termoplastico ad alta resistenza anti-UV e anti-invecchiamento  
Venduta al metro lineare

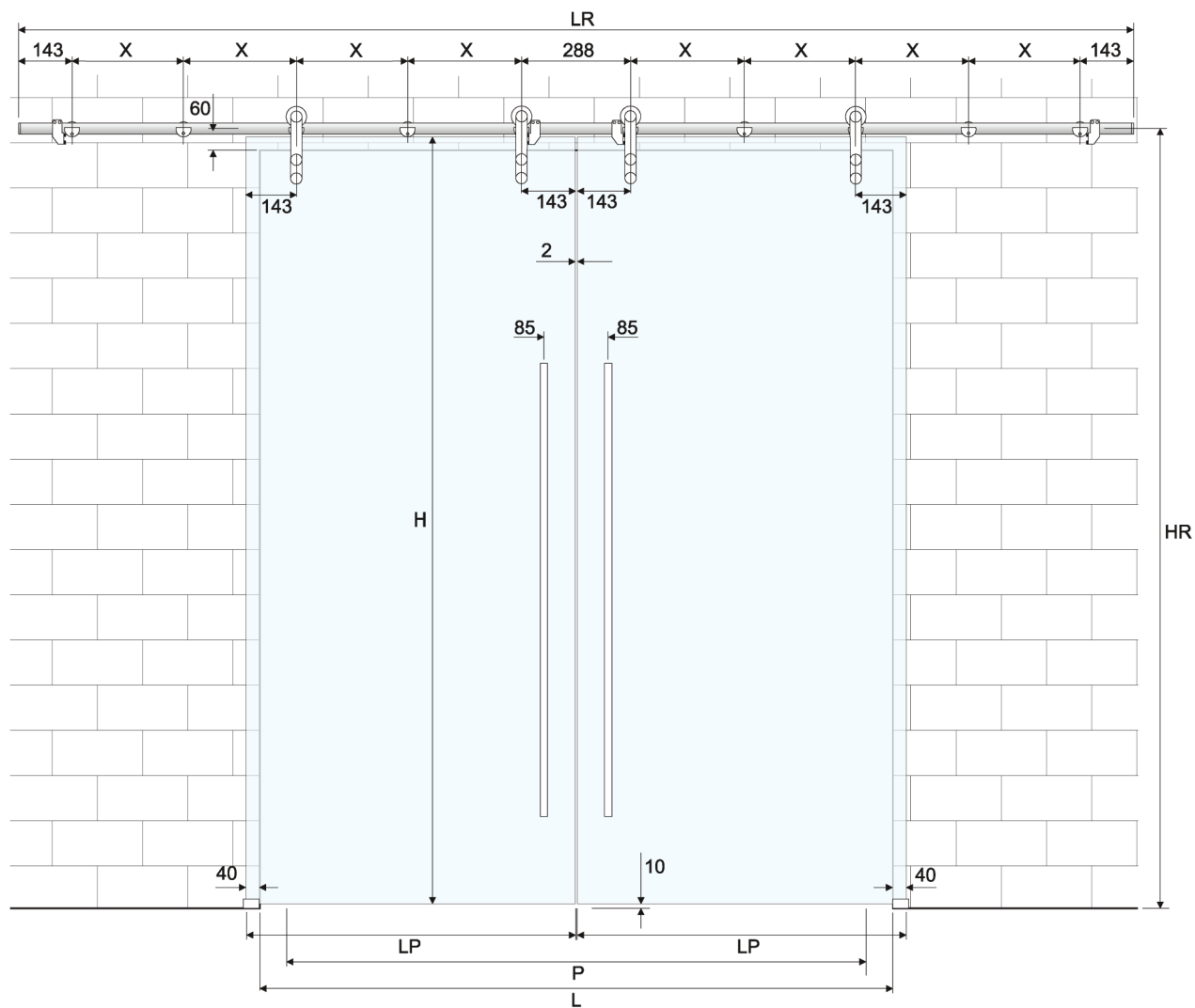
Adhesive ball seal  
For single and double sliding doors  
Special high resistance anti-aging anti-UV thermoplastic elastomer  
Sold by the meter



**R1 SYSTEM**


Dimensionamento della porta e del binario tutte le versioni (R01MK, R01VK, R01SK, R01S2K), anta singola	Door and track sizing all versions (R01MK, R01VK, R01SK, R01S2K), single door
Larghezza porta (LP) = L + 80 mm	Door width (LP) = L + 80 mm
Misura X: (L - 148 mm) / 2	X measurement: (L - 148 mm) / 2
Misura del passaggio (P) = L - 130 mm	Passage width (P) = L - 130 mm
Lunghezza rotaia (LR) = 4 * X + 286 mm	Track length (LR) = 4 * X + 286 mm
Altezza della porta = HR - 25 mm - 10 mm	Door height = HR - 25 mm - 10 mm

**R1 SYSTEM**



Dimensionamento della porta e del binario tutte le versioni (R01MK, R01VK, R01SK, R01S2K), anta doppia	Door and track sizing all versions (R01MK, R01VK, R01SK, R01S2K), double doors
Larghezza delle porte (LP) = $L/2 + 40$ mm	Doors width (LP) = $L/2 + 40$ mm
Lunghezza rotaia (LR) = $(L * 2) - 180$ mm	Track length (LR) = $(L * 2) - 180$ mm
Misura X: $(LR - 574 \text{ mm}) / 8$	X measurement: $(LR - 574 \text{ mm}) / 8$
Misura del passaggio (P) = $L - 260$ mm	Passage width (P) = $L - 260$ mm
Altezza della porta = $HR - 25 \text{ mm} - 10 \text{ mm}$	Door height = $HR - 25 \text{ mm} - 10 \text{ mm}$